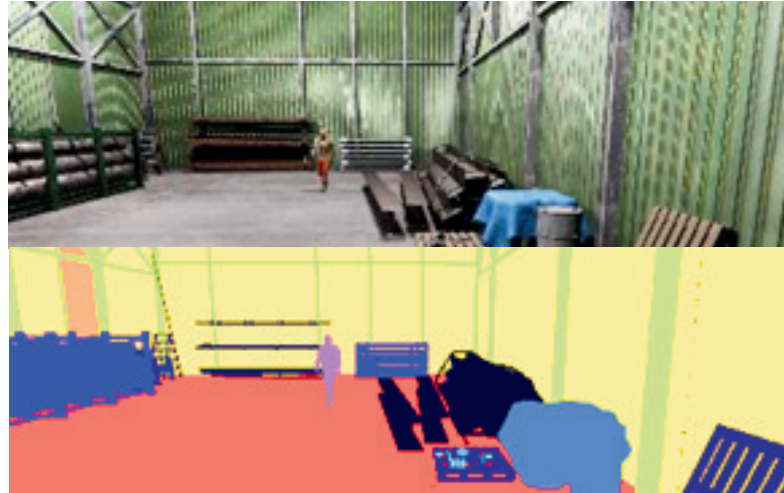




Vimeo-Site Management



Summary

Improving Site Management and Productivity with Smart Simulations





Inventory management and object location, for example of tools, can improve site efficiency and reduce wasted time by ensuring the quantity and location of materials and tools is carefully tracked

Mindtech's Dolphin dataset analysis platform can analyse existing training data and identify deficiencies such as the lack of certain assets in the training data.

Mindtech's Chameleon synthetic data creation platform can then create rich corner case training data based on the deficiencies identified by Dolphin delivering superior object recognition capabilities in AI models.

The ability to import digital twins of unique assets into Chameleon means AI models tracking and identifying unique often valuable assets can be easily developed

Mindtech Platform Benefits

-  Identify misplaced items on building sites, minimizing loss and delays
-  Precise tracking for dangerous materials, and asset checking to avoid theft
-  Predictive maintenance, to anticipate when equipment will need servicing or repair before a failure occurs.
-  Keep track of safety-related assets such as protective equipment to ensure compliance with safety standards and regulations.

Mindtech Quick Facts

- Dolphin - Delivering up to 90% reduction in data costs with improved model performance
- Chameleon - up to 10x faster creation of domain-matched, fully annotated vision images with no IP or privacy issues
- Training-ready data packs - IP-safe, privacy-compliant, domain-specific, images and annotation data for rapid AI vision system development



mindtech.global



contact-mt@mindtech.global



Pennine Five Block 2 20-22 Hawley St Sheffield S1 2EA